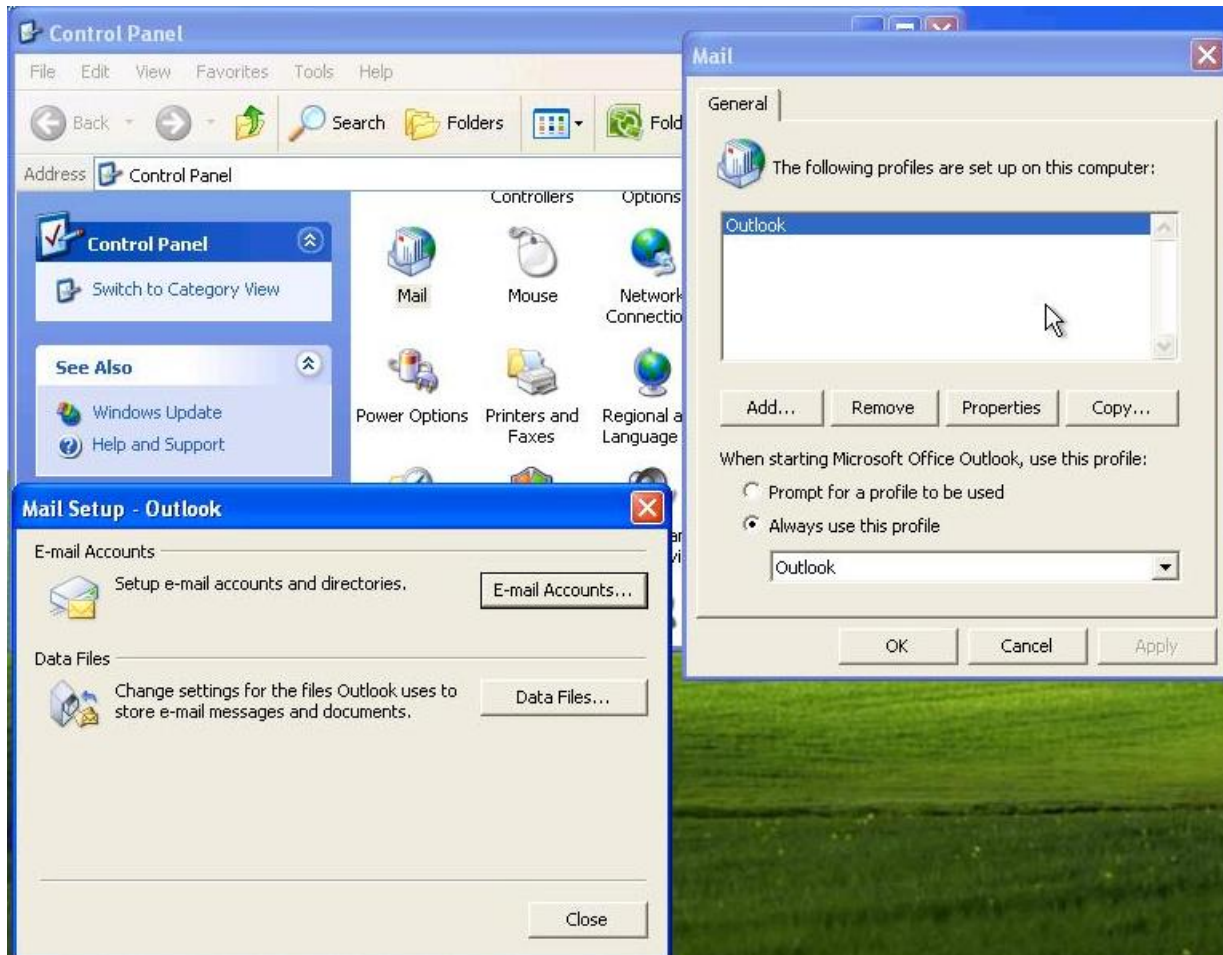


Pilgrim Technology Hosted Exchange Outlook Anywhere Setup for Outlook 2007



** Before making any changes to a Microsoft Outlook client that has any existing e-mail, contacts, calendars, or other data, please export all mailboxes to PST files and include all subfolders in the backup.

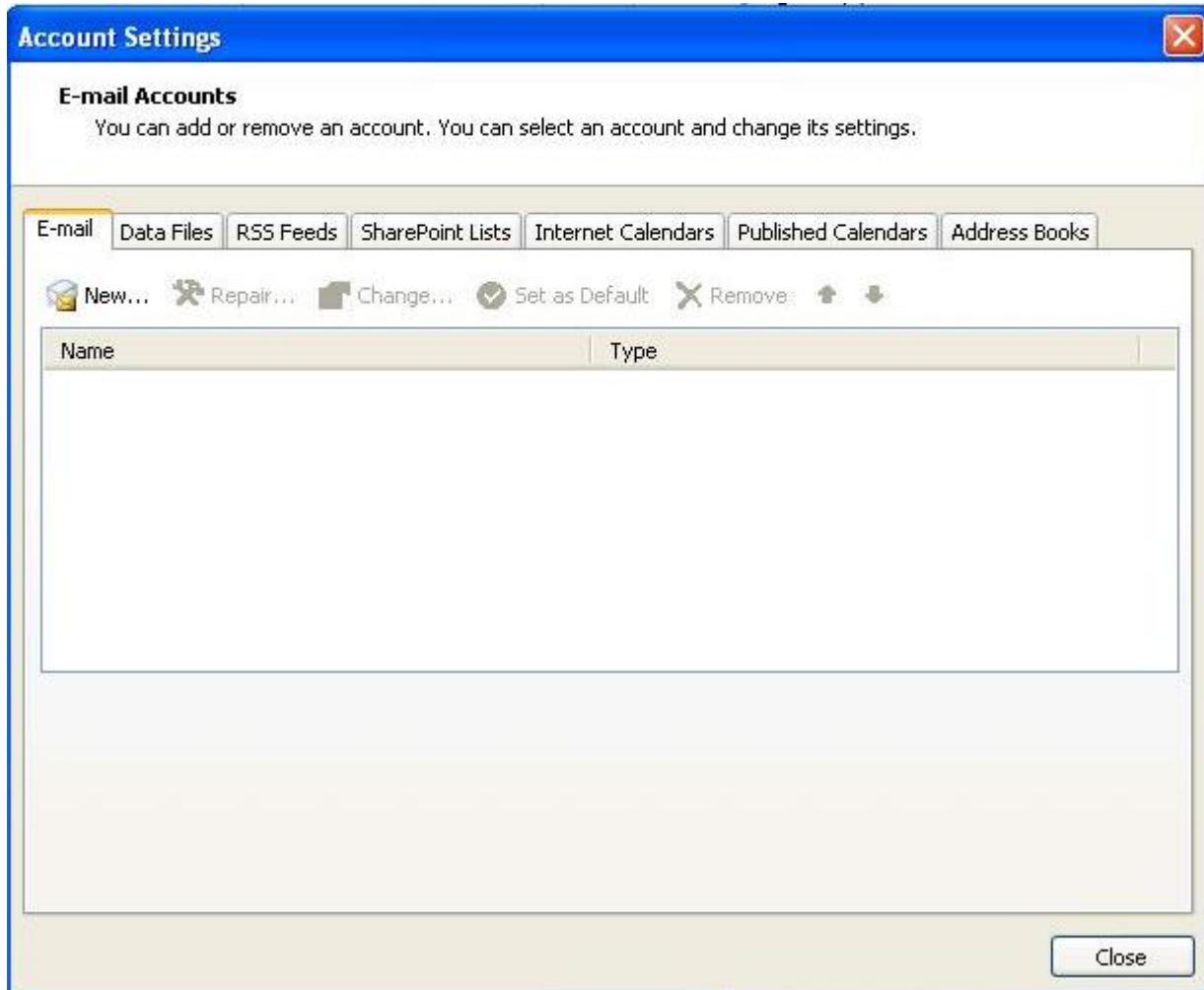
To begin configuration, open the mail profile selection in the control panel. If there is no profile, click Add and give your profile a name (here we used "Outlook"). Click on your profile and Properties. You will be presented with the Mail Setup window, then click E-mail Accounts button.



Pilgrim Technology Hosted Exchange Outlook Anywhere Setup for Outlook 2007



You will be presented with an Account Settings page, click on the New button on the E-mail tab.



Pilgrim Technology Hosted Exchange Outlook Anywhere Setup for Outlook 2007



On the Add New E-mail Account page, click Microsoft Exchange then Next

The screenshot shows the 'Add New E-mail Account' dialog box with the title bar 'Add New E-mail Account'. The main heading is 'Choose E-mail Service'. There are three radio button options: 'Internet E-mail' (unselected), 'Microsoft Exchange' (selected), and 'Other' (unselected). Below 'Other' is a text box containing 'Outlook Mobile Service (Text Messaging)'. At the bottom are three buttons: '< Back', 'Next >', and 'Cancel'.

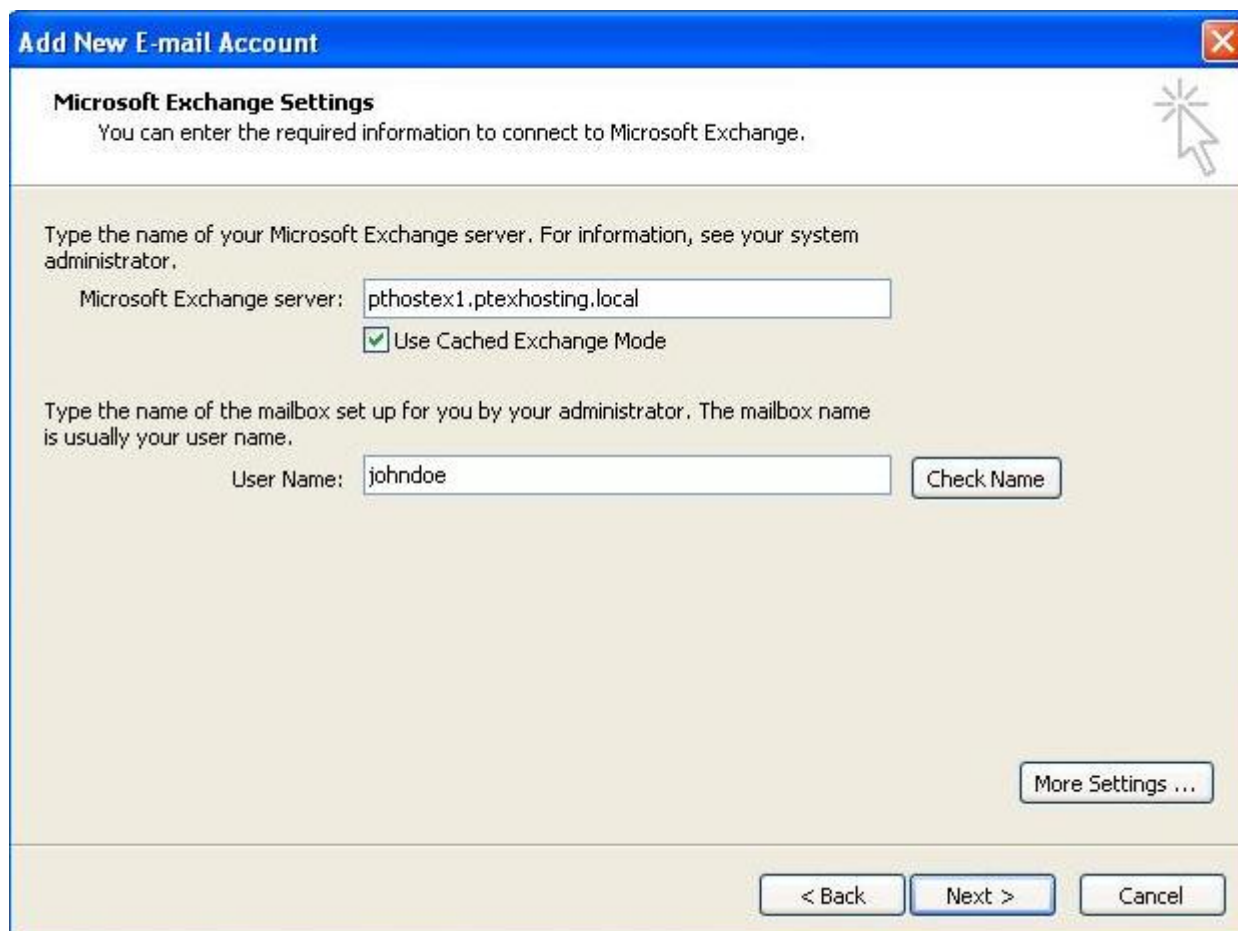
On the Add New E-mail Account page, select the checkbox for Manually configure server settings or additional server types, then click Next

The screenshot shows the 'Add New E-mail Account' dialog box with the title bar 'Add New E-mail Account'. The main heading is 'Auto Account Setup'. It contains four input fields: 'Your Name:' (with example 'Barbara Sankovic'), 'E-mail Address:' (with example 'barbara@contoso.com'), 'Password:', and 'Retype Password:'. Below the password fields is the text 'Type the password your Internet service provider has given you.'. At the bottom left is a checked checkbox labeled 'Manually configure server settings or additional server types'. At the bottom right are three buttons: '< Back', 'Next >', and 'Cancel'.

Pilgrim Technology Hosted Exchange Outlook Anywhere Setup for Outlook 2007



On the Add New E-mail Account page, enter “phtostex1.ptexhosting.local” for the Microsoft Exchange server. Leave the box checked for Use Cached Exchange Mode. Enter your user name in the User Name field, then click on More Settings



Add New E-mail Account

Microsoft Exchange Settings
You can enter the required information to connect to Microsoft Exchange.

Type the name of your Microsoft Exchange server. For information, see your system administrator.

Microsoft Exchange server:

Use Cached Exchange Mode


Type the name of the mailbox set up for you by your administrator. The mailbox name is usually your user name.

User Name:

You will be presented with an error message about Exchange unavailable. Just click OK



Microsoft Office Outlook

 The action cannot be completed. The connection to Microsoft Exchange is unavailable. Outlook must be online or connected to complete this action.

Pilgrim Technology Hosted Exchange Outlook Anywhere Setup for Outlook 2007



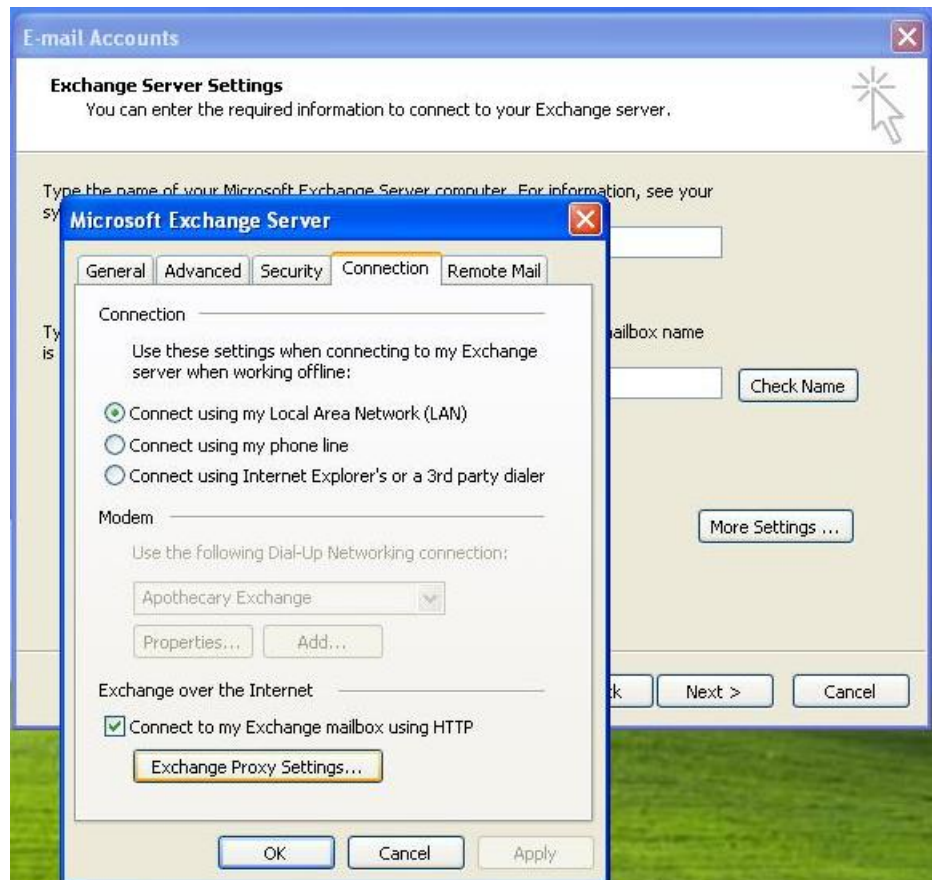
On the Microsoft Exchange window, click on OK



On the Microsoft Exchange Server window, click on the Connection tab.

Click on the checkbox for Connect to my Exchange mailbox using HTTP.

Click on Exchange Proxy Settings



Pilgrim Technology Hosted Exchange Outlook Anywhere Setup for Outlook 2007



Enter “gomihosting.com” in the Connection settings filed

Click all boxes as shown in the diagram below

Enter “msstd:gomihosting.com” as the Principal name for proxy server

Click on ok on all screens until you are out of mail setup and close the control panel



Launch Outlook

You will be presented with a login window

Enter your user name and password

Click on Remember my password

You will now be able to close and open Outlook any time without entering your credentials again. Any time you have an internet connection, your mailbox will be synchronized.

